

TYPHOON BEAM-M

SCALE



TECHNICAL PARAMETER

MAX. POWER
200W

LIGHT SOURCE
100W laser

ANGLE
0.7°-5°

PAN/TILT ROTATION
540°/270°(8-16bit)

DIMMER
0-100% 24Bit

DISPLAY

On Board Control, Custom Mode. 0-25Hz Strobe

CONTROL

DMX512, RDM, ARTNET, SACN, W-DMX(optional), Bluetooth

POWER CONNECTION

Seetronic power input and output

STATIC GOBO

19 gobos+white

COLORS

One color wheel(19 color+white, rainbow-floweffect)

CMYK
CMY

ROTATING GOBO

6 gobos

PRISM

24F + 8F rotating prisms

FROST

1 Frost filter.bidirectional rotating

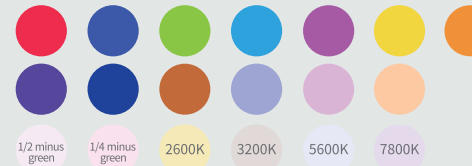
SIGNAL SOCKER

3pin or 5pin in and out, RJ45 in and out,USB-C

DIMENSIONS (L*W*H)

381x280x665mm

COLORS



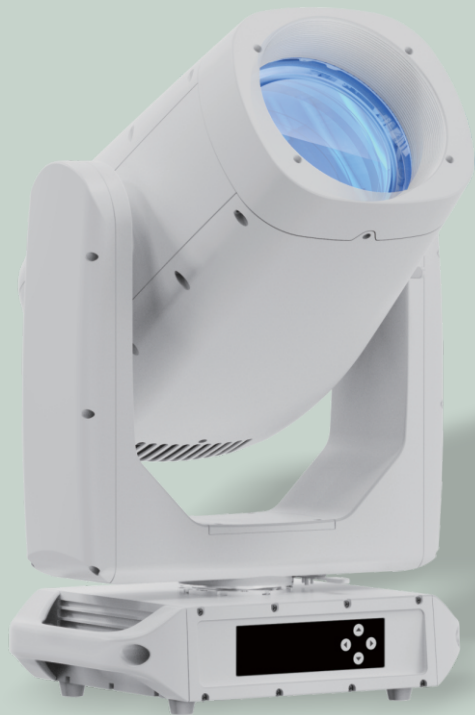
CMY



STATIC GOBOS



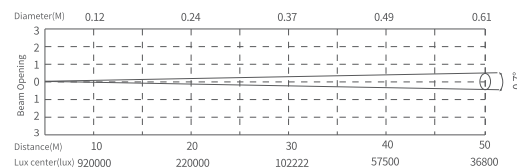
ROTATION GOBO



100W Laser Light Source

TYPHOON BEAM-M is an epoch-making waterproof moving head beam. It adopts a 100W laser light source, With an ultra-large 180mm wide lens, and the Illuminance at 20 meters can reach 220,000 lux. The beam is thick and full, bright and sharp, showing the momentum of 0.7-5° optical angle, with rich 19 fixed gobos, 6 rotatable gobos, 19 colour filters, 24 facet prism and 8 facet prism that can be used superimposed with bidirectional rotation, making the lighting effect more hierarchical and changeable. The professional CMY colour-mixing system realizes the smooth transition of colours. The unique X effect creates a variety of 3D dreamy spaces, which presents a universe world with fantastic colours. It makes people feel as if they are on a remote planet and experience the mysterious and romantic interstellar journey. In addition, the black hole effect is also unique in the lighting design. Precise dimming And Great intensity of the colour of the light simulates the wonders of the black hole and other phenomena. The infinite possibilities of the X effect are waiting for you to explore and inspire your exclusive creative inspiration. 25 kilograms lightweight made of brand-new aviation aluminium alloy material, IP66 protection design, all-weather protection, maintenance-free, and can be universally used both indoors and outdoors. Suitable for the market such as urban landscapes, concerts, indoor or outdoor performances.

PHOTOMETRIC DATA



SPECIFICATIONS

