

PIXI 40

TECHNICAL PARAMETER

MULTIPLE COLOR

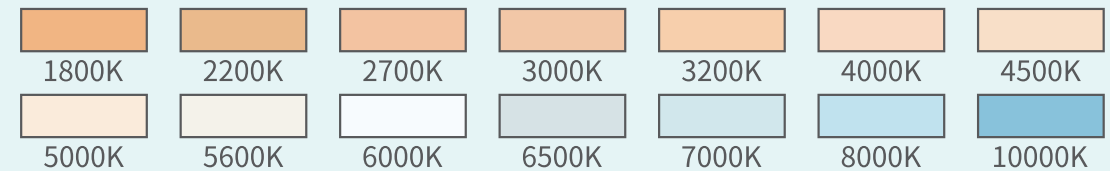
PRODUCT NAME	MAX.POWER	LUMEN	PEAK INTENSITY	LED QTY	OPTICS
PIXI 40	40W	1001lm	35341cd(6°)	Multiple color (RGLB, RGBW)	6°, 10°, 15°, 20°, 30°, 36°

CHANNEL MODE

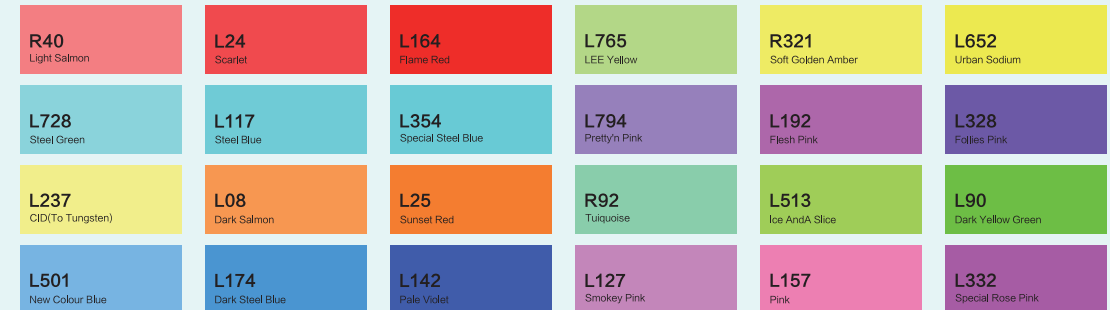
Multiple Color, Dynamic Color and DMX channel mode:

SOLID, ARC1, ARC1+D, ARC2, ARC2+D, ARC FULL, SPECIAL2.

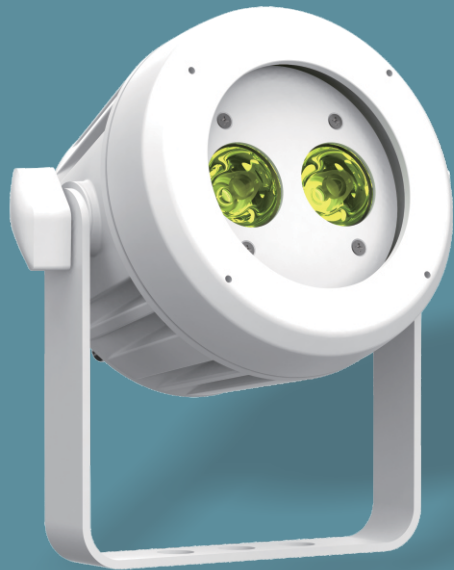
COLOR CONSISTENCY SYSTEM COLOR TEMPERATURE SEGMENT



24 COLOR CARD



SPECIFICATIONS

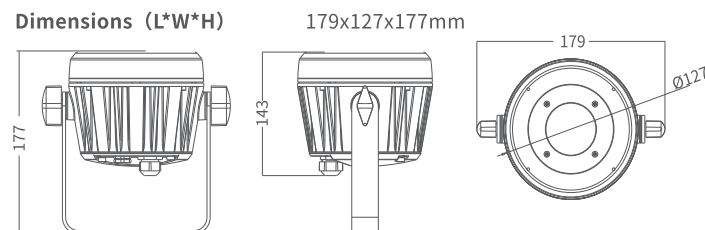


PIXI 40 series is designed for superior color mixing and pure white applications.

PIXI 40 Multiple Color is a 20W/LEDs, powerful, middle-size and efficiency led spot light, carry the color consistency system as a good advantage. PIXI 40 Dynamic Color as a single LEDs spot light, equipped with color consistency system and a wide selection of beam angles and is fully IP-rated for permanent outdoor use.

Uniform color mixing with 6 beam angle options and available more width lens optics.

DIMENSIONAL DRAWING



PHOTOMETRIC DATA

