

600W LED PROFILE

www.lbtpro.com / info@lbtpro.com

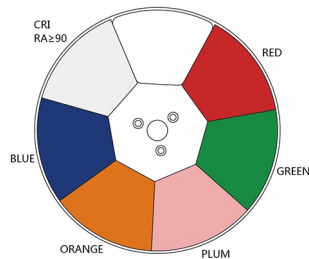
- 600W Moduled LED
- 8500K Color Temperature
- 3° - 55° Beam Angle



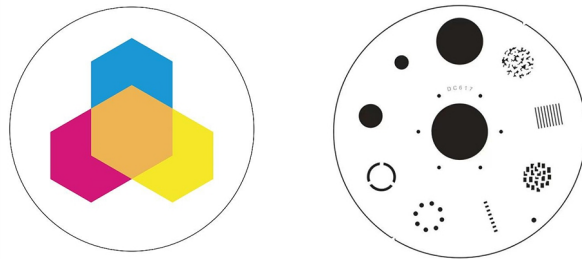
NEW



COLOR WHEEL



FIXED GOBO



ROTATION GOBO



Optics

Light Source : 600W MODULED LED ENGINE
Color Temperature : 8500K
Rendering Index : 90
Light Source Lifespan : 20000 Hours
Beam Angle : 3°-55°
Optical Aperature : 120MM

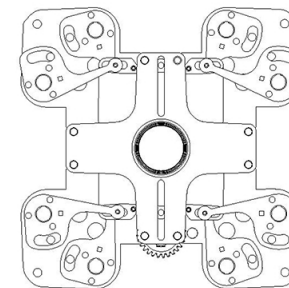
Mode

Operate Mode : DMX512Master/Slave, RDM/ Artnet Optional)
DMX Channel : 25/29/34 Ch.
Display : 1.7 Inch TFT Screen with Touch Buttons

Power Supply

Input Voltage : 100-240V, 50/60HZ
Power Connection : Powercon Power Input/Output
Signal Connection : 3 Pin /5 Pin DMX Input/Output (Customized Artnet)
Power Consumption: 600W
Power Factor : PFC>0.95
Work Environment : -10°C~40°C

Cutting System



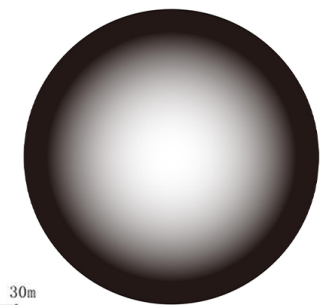
Effects

X-AXIS : 540° **Y-AXIS :** 270°
Colour System : 5 Color+White, CMY+CTO
Pattern System : Fixed Gobo (8 Fixed Gobo+Blank)\Rotation Gobo (7 Rotation Gobo+Blank)
Cutting System : 4 Grating to Achieve Fast and Smooth Cutting Each Grating Cutting Direction and Angle can be Independently Controlled the Entire Cutting Module can beRotated 90°
Frost : Electronic Frost
Strobe : 0-30 HZ
Dimming : 0-100% 16BIT
Dimming Mode : Linear Dimming/Square Curve/Inverse Square Curve/S-Curve Dimming/ Fast / Slow Dimming\
Prism : 4 Prism that can be Rotated in Both directions (Prism Angle 14°)

Physical Property

Size : 376x265x723 mm
Weight : 27 Kg.
Cooling System : Copper Tube Heat Dissipation and Temperature Sensing
Heat Dissipation Shell : PA6 Nylon
Standard : Power Cable x 1, DMX Cable x 1, Safety Rope x 1, Folding Clamp x 2 Cutting System

Frost



Illuminance at Distance

